

# Lower Heads $49^{\circ}25.850'N$ $2^{\circ}28.550'W$

Lower Heads South Cardinal Buoy is positioned SSW of Herm and Jethou. It exhibits a white quick-flashing plus long flashing light with a period of 15 seconds. It also has a bell to aid identification in low visibility.

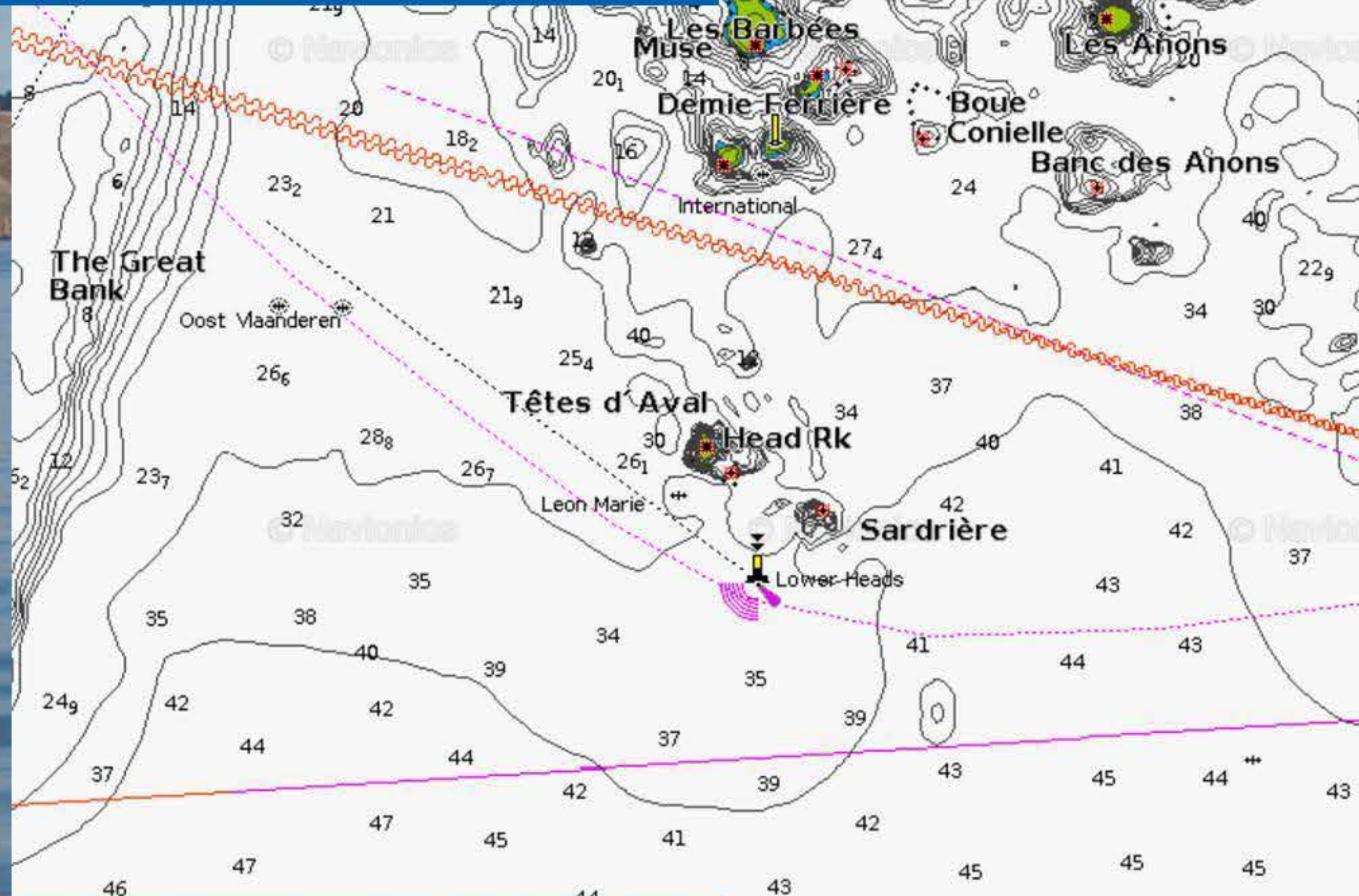


Chart depths in metres. Co-ordinates are approximate. This should not be used for navigation.