

## Local Notices to Mariners

<b>LNTM No.</b>	031/2019
<b>Subject</b>	<b>Guernsey to Jersey – Subsea Cable Trenching and Burial</b>

Mariners are advised that the vessel *Global Symphony* and *Ella F* will be continuing trenching and burial work on the length of the replacement HV cable between:

**Havelet Bay (Guernsey) and Greve de Lecq (Jersey).**

The operation is scheduled to run until **12<sup>th</sup> November 2019**.



*Global Symphony*

**Call Sign: C6YY3**  
**MMSI No: 311049100**



*Ella F*

**Call Sign: PBMN**  
**MMSI No: 244020028**

Vessels are to pass *Global Symphony* and *Ella F* at distance of at least **500m** during the operation.

No fishing is requested along the cable corridor for operational and navigational safety reasons, until such time as the works are completed.

**Guernsey Harbours**  
**St Julian's Emplacement**  
**St Peter Port**  
**Guernsey**  
[www.harbours.gg](http://www.harbours.gg)

**Captain David Barker**  
**Harbour Master**

## Local Notices to Mariners

Sailing, rowing and swimming is permitted within the respective bays.

No anchoring or setting of buoys or pots is to be carried out within the bays until the trenching works are complete. Near shore work in Guernsey is expected **8<sup>th</sup> to 10<sup>th</sup> November 2019**.

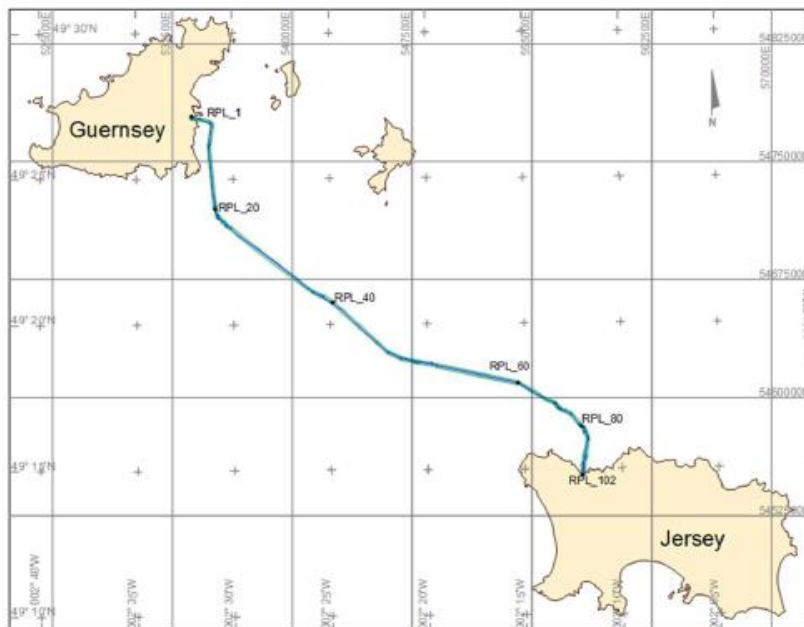


Figure 1: GJ10 HV power cable Route

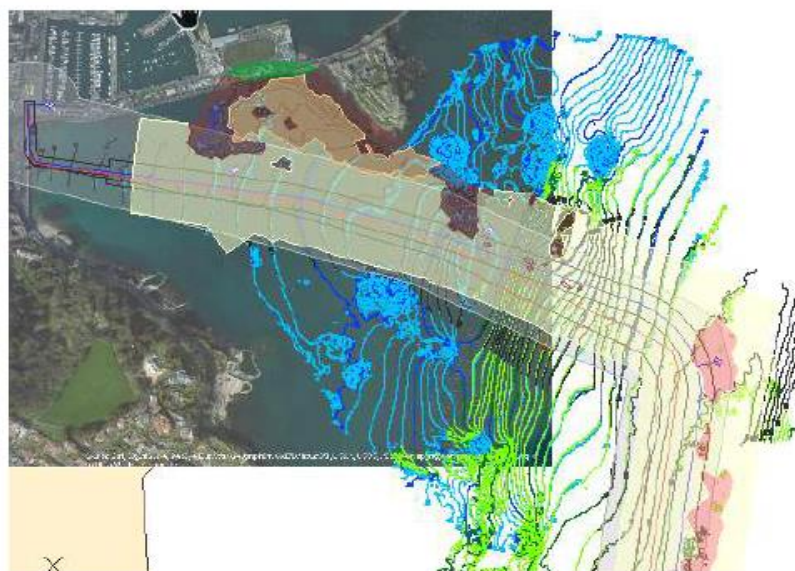


Figure 2: Nearshore Works - Guernsey (Havelet Bay)

**CANCEL 029/2019**

Guernsey Harbours  
St Julian's Emplacement  
St Peter Port  
Guernsey  
[www.harbours.gg](http://www.harbours.gg)

**Captain David Barker**  
Harbour Master