

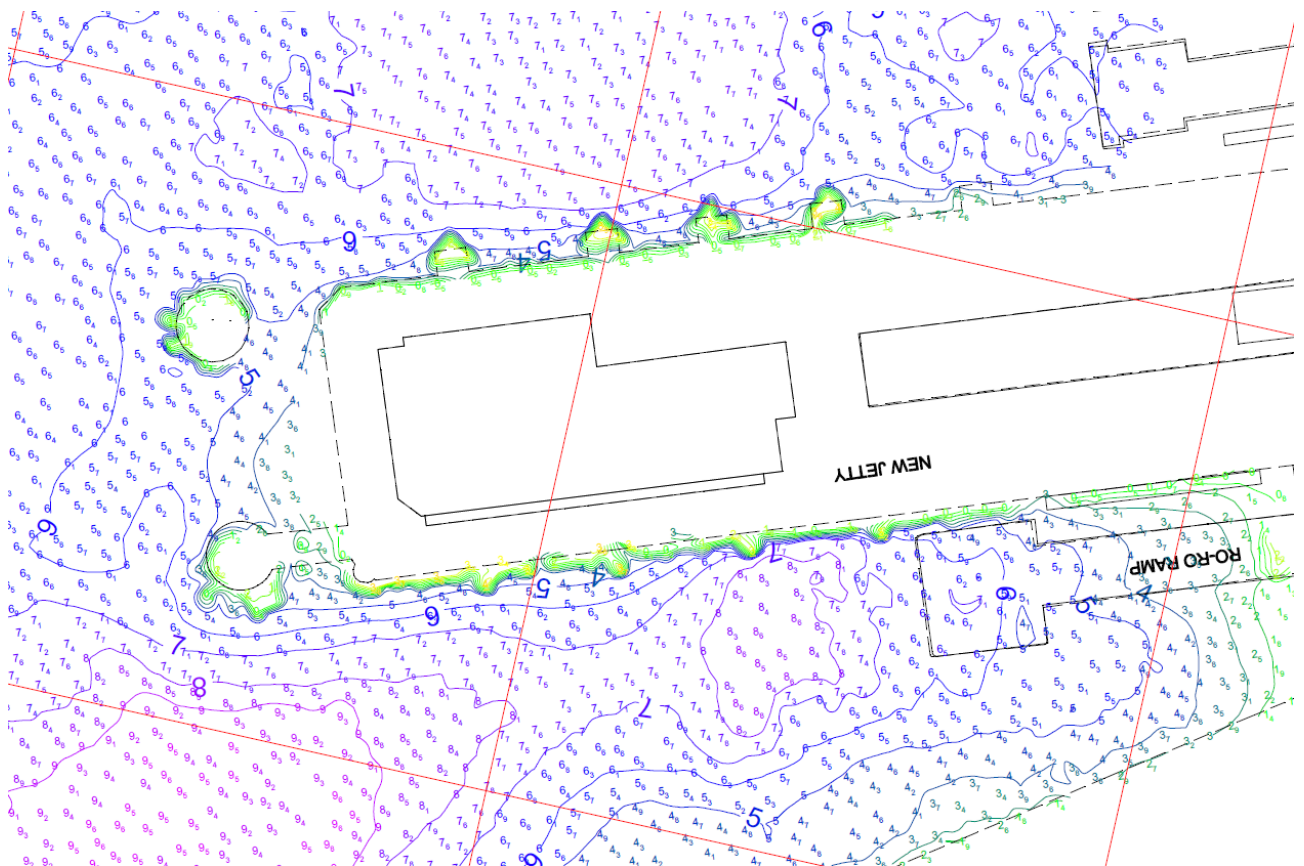
Local Notices to Mariners

LNTM No.	010/2019
Subject	St Peter Port – RoRo Berths – Minimum Depths

Following a multibeam survey of St Peter Port in 2018 the confirmed minimum depths, outside the line of the fender piles, on the RoRo berths are:

Berth 1 – 4.8m

Berth 2 – 5.2m



Full survey data has been submitted to the UKHO for inclusion on future chart editions.

Guernsey Harbours
St Julian's Emplacement
St Peter Port
Guernsey
www.harbours.gg

Captain David Barker
Harbour Master