

Local Notices to Mariners

LNTM No.	003/2017
Subject	South of Banc de la Schole - Survey



Notice to Mariners Vessel: MV Bibby Tethra

Date: 09/02/2017

Issue No: 02

Guernsey Harbours
St Julian's Emplacement
St Peter Port
Guernsey
www.guernseyharbours.gov.gg

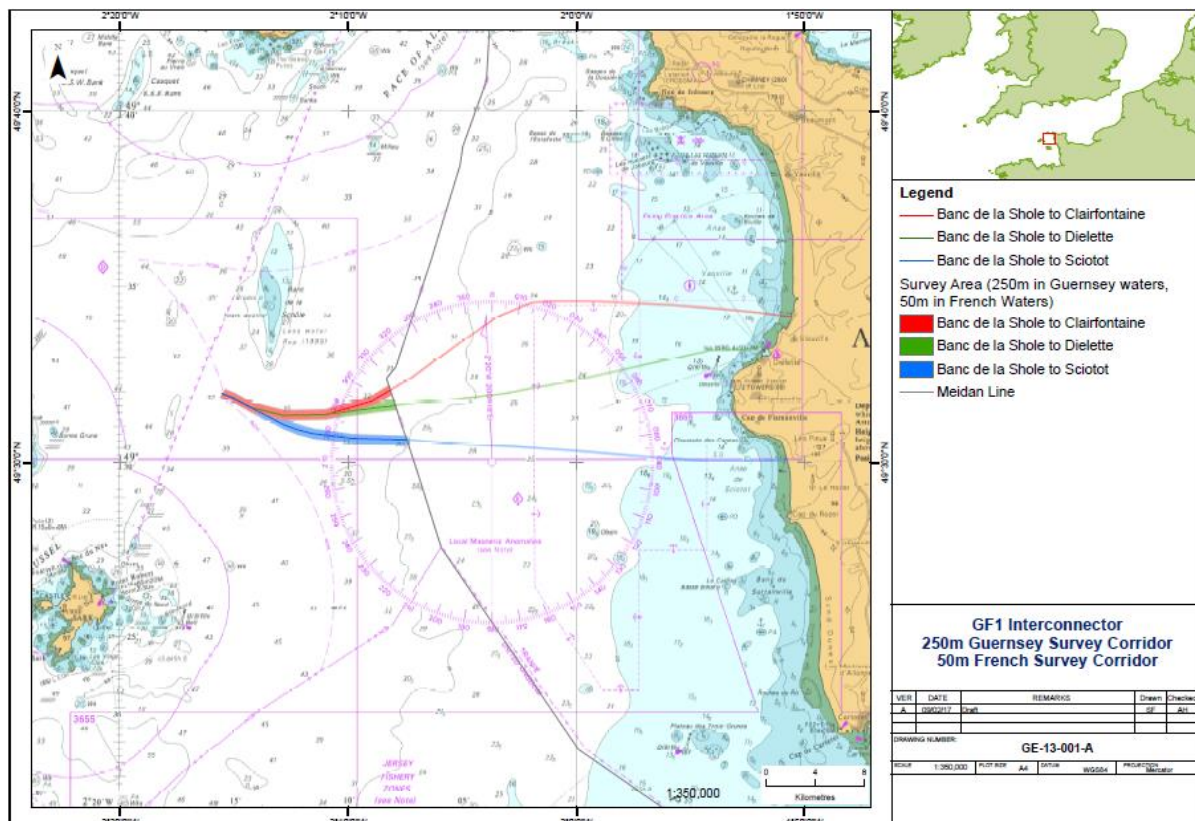
Captain Chad Murray
Harbour Master

Local Notices to Mariners

Notice to Mariners

Hydrographic & Geophysical Survey Operations

Please be advised that Bibby HydroMap Limited on behalf of Guernsey Electricity Limited (GEL) will be carrying out hydrographic & geophysical survey operations in the following area:



Survey Operations are anticipated to commence on 10/02/2017 weather and permissions permitting. The full survey will take up to 14 days, the vessel will be in French waters for the majority of this time. Guernsey Harbours will be contacted with information of the notification to start.

Survey operations will be undertaken using survey vessel Bibby Tethra}.

Guernsey Harbours
St Julian's Emplacement
St Peter Port
Guernsey
www.guernseyharbours.gov.gg

Captain Chad Murray
Harbour Master

Local Notices to Mariners

Overview of Survey Area

The outline coordinates for the survey routes marked above are as follows:

Route ref. Number	Description	Line Type	Start Position	End Position
1	Banc de la Schole to Sciotot	Main Line	49:31.961N 02:15.532W	49:30.035N 01:52.018W
2	Banc de la Schole to Dielette	Main Line	49:31.961N 02:15.532W	49:33.213N 01:52.717W
3	Banc de la Schole to Clairfontaine	Main Line	49:31.961N 02:15.532W	49:34.439N 01:55.124W

Bibby Tethra Details



Guernsey Harbours
St Julian's Emplacement
St Peter Port
Guernsey
www.guernseyharbours.gov.gg

Captain Chad Murray
Harbour Master

Local Notices to Mariners

MV Bibby Tethra is a 27.5m x 10.0m semi-SWATH coastal survey vessel. The lower section of the hulls are dark blue and the upper sections and wheelhouse are white, with 'SURVEY' lettering in dark blue letters on both sides of the vessel. The vessel will operate on a 24hr basis and will display appropriate day shapes & lights during survey operations. The vessel will actively transmit an AIS signal.

Survey operations will involve towing survey equipment on and below the water surface, up to 200m behind the vessel. A wide berth is requested at all times as the vessel will be restricted in her ability to manoeuvre. Survey speed will generally be around 4 knots.

Contact Details	
Bibby Tethra Call Sign	2EGF8
Project Manager	Simon Baldwin (00 44 7583 919 661) simon.baldwin@bibbyhydromap.com
Company Details	Bibby Hydromap Limited. 4 Brunel Road, Croft Business Park Bromborough, Wirral, CH62 3NY T: 0151 328 1120

Joint Operations

A guard boat, provided by CERES marine shall be in operation throughout the survey to ensure that the survey vessel MV Bibby Tethra is able to work in a safe and unfettered condition, and to make sure other vessels operate outside of the survey area. Special attention will be paid to fishing gear. The crew of the vessel will provide fisheries liaison for the project.

Local Notices to Mariners

CERES

Details



Ceres Southboat is a 11.5m x 6.0m coastal catamaran. The hulls and wheelhouse are white, with 'CERES' lettering in maroon letters on both sides of the vessel. The vessel will operate on a 24hr basis and will display appropriate day shapes & lights during operations.

Contact Details	
CERES Call Sign	2AXD6
Captain	Guy Mauger (00 33 6 08 54 13 74)
Survey Manager	Guillaume Launey (00 33 6 18 29 29 62)
Company Details	CERES, 29 la madeleine, BP 19, 50760 Montfarville

Guernsey Harbours
St Julian's Emplacement
St Peter Port
Guernsey
www.guernseyharbours.gov.gg

Captain Chad Murray
Harbour Master