

Local Notices to Mariners

LNTM No.	011/2015
Subject	ST PETER PORT – ALBERT PIER - CRUISE SHIP TENDERING OPERATIONS

A dedicated tendering facility is provided at Albert Pier, St Peter Port Harbour. The facility allows for 2 independent tendering operations to co-operate at any time.

St Peter Port harbour is a busy operational area with significant commercial vessel and leisure craft activity throughout the day.

All mariners using the southern fairway, Fish Quay, Albert Marina, Victoria Marina and Boatworks + fuel facility are reminded to navigate with caution during periods of high traffic volumes.

Additional Harbour Authority staff will be waterborne to assist and monitor.

Mariners are requested to observe the following when manoeuvring in or near St Peter Port harbour:

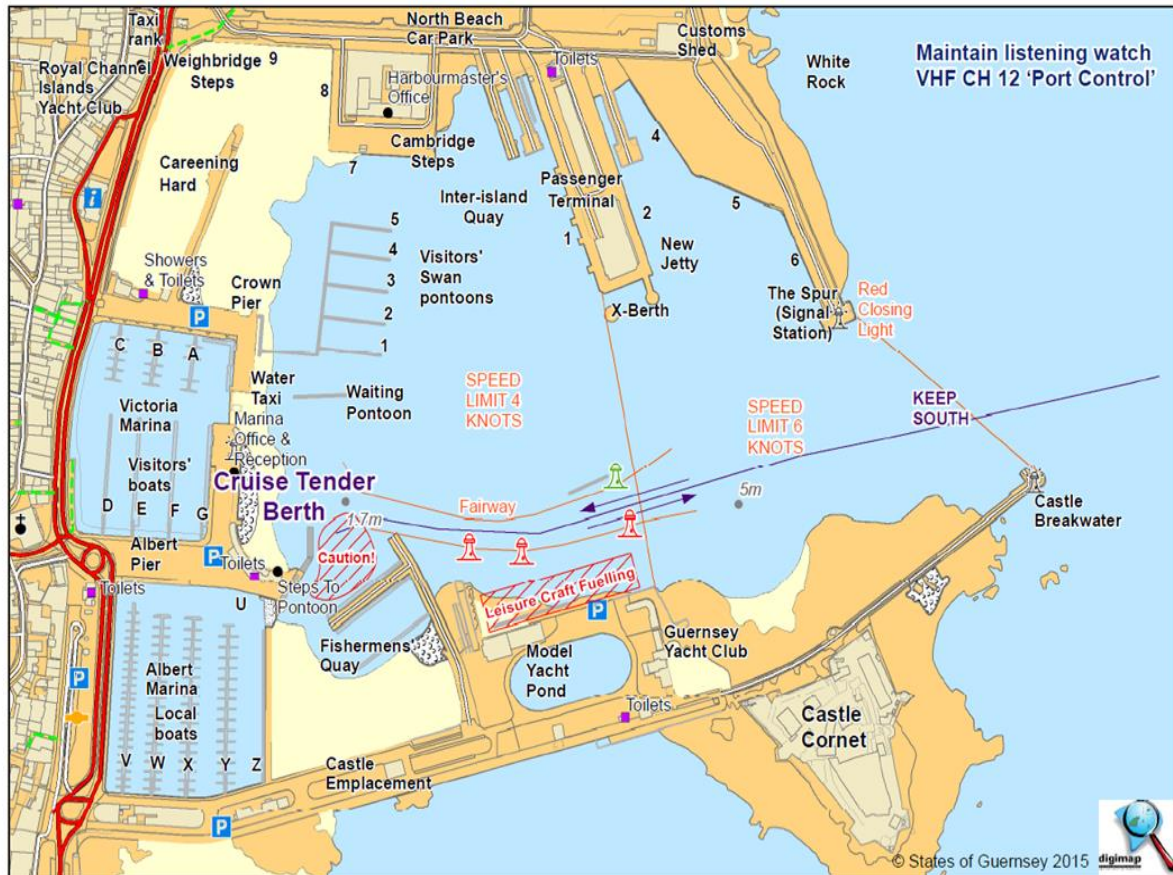
1. Maintain a listening watch on **VHF Ch 12** at all times.
2. Obey all instructions from '**PORT CONTROL**' and Port Authority operatives.
3. Observe the Red closing light. If the light is illuminated, a commercial movement is occurring. Vessels are to keep well clear of the harbour entrance until the light is extinguished.
4. Vessels shall **KEEP SOUTH** at the harbour entrance when entering and leaving.
5. Observe the speed limits of **6 knots** in the outer harbour area and **4 knots** once entering the fairway.
6. The fairway may be congested at times. Overtaking is not permitted within the fairway.
7. Note the **CAUTION** area highlighted on the chartlet. Leisure craft and commercial fishing vessels also manoeuvre in this area. **AVOID CONGREGATING IN THIS AREA.**

Guernsey Harbours
St Julian's Emplacement
St Peter Port
Guernsey

www.guernseyharbours.gov.gg

Captain Chad Murray
Harbour Master

Local Notices to Mariners



Guernsey Harbours
St Julian's Emplacement
St Peter Port
Guernsey
www.guernseyharbours.gov.gg

Captain Chad Murray
Harbour Master